

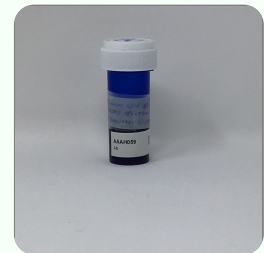
Order #: CAN200527-080009      Order Date: 2020-05-27      Collection Date: 2020-06-04      Report Date: 2020-06-09

Batch #: A8  
Sample #: AAAH059  
Specimen Type: CBD/HEMP Derivative Products (Ingestion)  
Extracted From: hemp  
Description: strawberry lemonade tincture

Initial Gross Weight: 19241 mg  
Net Weight: 10534 mg  
Density: .9531 mg/ml  
Method: SOP-3



Potency <b>Tested</b>	Heavy Metals <b>Passed</b>	Mycotoxins <b>Passed</b>
Terpenes <b>Tested</b>	Pathogenic Microbiology <b>Passed</b>	Residual Solvents <b>Passed</b>
Listeria Monocytogenes <b>Passed</b>	Pesticides <b>Passed</b>	



The photos on this report are of a sample collected by the lab and may vary from the final packaging.

<b>CBD Total</b> 1.7910%      179.8156mg	<b>THC Total</b> Not Detected	<b>CBG Total</b> 0.0667%      6.7007mg
<b>CBN Total</b> 0.0292%      2.9337mg	<b>Other Cannabinoids</b> Not Detected	<b>Total Cannabinoids</b> 1.8870%      189.4499mg

**Potency - 11 (Tested)**

**(HPLC/LCMSMS)**

Analyte	Result (mg/ml)	(%)	LOQ (%)	Analyte	Result (mg/ml)	(%)	LOQ (%)	Analyte	Result (mg/ml)	(%)	LOQ (%)
CBC	<LOQ	0.001		CBD	17.070	1.791	0.001	CBDA	<LOQ	0.001	
CBDV	<LOQ	0.001		CBG	0.636	0.067	0.001	CBGA	<LOQ	0.001	
CBN	0.278	0.029	0.001	Delta-8 THC	<LOQ	0.001		Delta-9 THC	<LOQ	0.001	
THCA-A	<LOQ	0.001		THCV	<LOQ	0.001		Total CBD	17.070	1.791	0.001
Total THC	<LOQ	0.001									

\*Total CBD = CBD + (CBD-A \* 0.877), \*Total THC = THCA-A \* 0.877 + Delta 9 THC, \*CBG Total = (CBGA \* 0.877) + CBG, \*CBN Total = (CBNA \* 0.877) + CBN, \*Other Cannabinoids Total = CBC + CBDV + THCV + THCV-A, \*Total Detected Cannabinoids = CBD Total + CBG Total + CBN Total + THC Total + CBC + CBDV + THCV + THCV-A, \*Total (mg) = Total (%) ÷ 100 \* Net Weight(mg) (mg/ml) = Milligrams per Milliliter, , LOQ = Limit of Quantitation

Xueli Gao      Lab Toxicologist  
Ph.D., DABT

Aixia Sun      Principal Scientist  
D.H.Sc., M.Sc., B.Sc., MT (AAB)

This report shall not be reproduced, without written approval, from ACS Laboratory. The results of this report relate only to the material or product analyzed. Test results are confidential unless explicitly waived otherwise. Accredited by a third-party accrediting body as a competent testing laboratory pursuant to ISO/IEC 17025 of the International Organization for Standardization.

721 Cortaro Drive  
Sun City Center, FL - 33573

P: +1 (866) 762-8379  
F: +1 (813) 634-4538

E: info@acslabcannabis.com  
http://www.acslabcannabis.com

License No. 800025015  
CLIA No. 10D1094068

Order #: CAN200527-080009      Order Date: 2020-05-27      Collection Date: 2020-06-04      Report Date: 2020-06-09

Batch #: A8  
Sample #: AAAH059  
Specimen Type: CBD/HEMP Derivative Products (Ingestion)  
Extracted From: hemp  
Description: strawberry lemonade tincture

Initial Gross Weight: 19241 mg  
Net Weight: 10534 mg  
Density: .9531 mg/ml  
Method: SOP-3



## Heavy Metals (Passed) (ICP-MS)

Analyte	Action Level (ppb)	Result (ppb)	LOQ (ppb)	Analyte	Action Level (ppb)	Result (ppb)	LOQ (ppb)	Analyte	Action Level (ppb)	Result (ppb)	LOQ (ppb)
Arsenic (As)	1500	<LOQ	100	Cadmium (Cd)	500	<LOQ	100	Lead (Pb)	500	<LOQ	100
Mercury (Hg)	3000	<LOQ	100								

(ppb) = Parts per Billion, (ppb) = (µg/kg), , LOQ = Limit of Quantitation

## Mycotoxins (Passed) (LCMS/MS)

Analyte	Action Level (ppb)	Result (ppb)	LOQ (ppb)	Analyte	Action Level (ppb)	Result (ppb)	LOQ (ppb)	Analyte	Action Level (ppb)	Result (ppb)	LOQ (ppb)
Aflatoxin B1		<LOQ	6	Aflatoxin B2		<LOQ	6	Aflatoxin G1		<LOQ	6
Aflatoxin G2		<LOQ	6	Aflatoxin Total	20	<LOQ	6	Ochratoxin A	20	<LOQ	12

(ppb) = Parts per Billion, (ppb) = (µg/kg), , LOQ = Limit of Quantitation

Xueli Gao      Lab Toxicologist  
Ph.D., DABT

Aixia Sun      Principal Scientist  
D.H.Sc., M.Sc., B.Sc., MT (AAB)

*This report shall not be reproduced, without written approval, from ACS Laboratory. The results of this report relate only to the material or product analyzed. Test results are confidential unless explicitly waived otherwise. Accredited by a third-party accrediting body as a competent testing laboratory pursuant to ISO/IEC 17025 of the International Organization for Standardization.*

721 Cortaro Drive  
Sun City Center, FL - 33573

P: +1 (866) 762-8379  
F: +1 (813) 634-4538

E: [info@acslabcannabis.com](mailto:info@acslabcannabis.com)  
<http://www.acslabcannabis.com>

License No. 800025015  
CLIA No. 10D1094068

Order #: CAN200527-080009      Order Date: 2020-05-27      Collection Date: 2020-06-04      Report Date: 2020-06-09

Batch #: A8  
Sample #: AAAH059  
Specimen Type: CBD/HEMP Derivative Products (Ingestion)  
Extracted From: hemp  
Description: strawberry lemonade tincture

Initial Gross Weight: 19241 mg  
Net Weight: 10534 mg  
Density: .9531 mg/ml  
Method: SOP-3



## Terpenes - FL (Tested)

(GC/GCMS)

Analyte	Result (mg/g)	(%)	LOQ (%)	Analyte	Result (mg/g)	(%)	LOQ (%)	Analyte	Result (mg/g)	(%)	LOQ (%)
(+)-Cedrol	<LOQ		0.001	(R)-(+)-Limonene	7.193	0.719	0.001	3-Carene	0.164	0.016	0.001
Alpha-Bisabolol	<LOQ		0.001	alpha-Cedrene	<LOQ		0.001	alpha-Humulene	0.132	0.013	0.001
alpha-Phellandrene	<LOQ		0.001	Alpha-Pinene	0.234	0.023	0.001	Alpha-Terpinene	0.173	0.017	0.001
Borneol	<LOQ		0.001	Beta-Myrcene	1.593	0.159	0.001	Beta-Pinene	0.709	0.071	0.001
Caryophyllene oxide	<LOQ		0.001	Camphene	<LOQ		0.001	Camphors	<LOQ		0.001
Fenchyl Alcohol	<LOQ		0.001	cis-Nerolidol	<LOQ		0.001	Eucalyptol	0.049	0.005	0.001
Guaiol	<LOQ		0.001	Farnesene	<LOQ		0.001	Fenchone	<LOQ		0.001
Isopulegol	<LOQ		0.001	Gamma-Terpinene	0.889	0.089	0.001	Geraniol	<LOQ		0.001
Ocimene	<LOQ		0.001	Hexahydrothymol	<LOQ		0.001	Geranyl acetate	<LOQ		0.001
Sabinene Hydrate	<LOQ		0.001	Linalool	2.852	0.285	0.001	Isoborneol	<LOQ		0.001
trans-beta-Ocimene	<LOQ		0.001	Linalool	2.852	0.285	0.001	Nerol	<LOQ		0.001
				Pulegone	<LOQ		0.001	Sabinene	0.148	0.015	0.001
				Terpineol	0.339	0.034	0.001	Terpinolene	0.763	0.076	0.001
				Trans-Caryophyllene	1.615	0.162	0.001	trans-Nerolidol	0.057	0.006	0.001
								Valencene	<LOQ		0.001

(mg/g) = Milligram per Gram, , LOQ = Limit of Quantitation

## Pathogenic Microbiology #1 (MMTC Compliance Panel) (Passed)

(Micro Array)

Analyte	Result	Analyte	Result
Salmonella	Absence	STEC E. Coli	Absence

Xueli Gao  
Ph.D., DABT

Lab Toxicologist

Aixia Sun

D.H.Sc., M.Sc., B.Sc., MT (AAB)

Principal Scientist

This report shall not be reproduced, without written approval, from ACS Laboratory. The results of this report relate only to the material or product analyzed. Test results are confidential unless explicitly waived otherwise. Accredited by a third-party accrediting body as a competent testing laboratory pursuant to ISO/IEC 17025 of the International Organization for Standardization.

721 Cortaro Drive  
Sun City Center, FL - 33573

P: +1 (866) 762-8379  
F: +1 (813) 634-4538

E: [info@acslabcannabis.com](mailto:info@acslabcannabis.com)  
<http://www.acslabcannabis.com>

License No. 800025015  
CLIA No. 10D1094068

Order #: CAN200527-080009      Order Date: 2020-05-27      Collection Date: 2020-06-04      Report Date: 2020-06-09

Batch #: A8  
Sample #: AAAH059  
Specimen Type: CBD/HEMP Derivative Products (Ingestion)  
Extracted From: hemp  
Description: strawberry lemonade tincture

Initial Gross Weight: 19241 mg  
Net Weight: 10534 mg  
Density: .9531 mg/ml  
Method: SOP-3



### Residual Solvents (Extract Only) (Passed)

(GC/GCMS)

Analyte	Action Level (ppm)	Result (ppm)	LOQ (ppm)	Analyte	Action Level (ppm)	Result (ppm)	LOQ (ppm)	Analyte	Action Level (ppm)	Result (ppm)	LOQ (ppm)
Acetone	5000	<LOQ	87.9	Benzene	1.6	<LOQ	1.6	Chloroform	53	<LOQ	53
Ethanol	5000	<LOQ	26.7	Hexane	60	<LOQ	36.6	I-Butane	5000	<LOQ	100
Isopropanol	5000	<LOQ	52.3	Methanol	3000	<LOQ	87.9	N-Butane	5000	<LOQ	200
Pentane	5000	<LOQ	389.5	Toluene	890	<LOQ	38.4				

(ppm) = Parts per Million, (ppm) = (µg/g), LOQ = Limit of Quantitation

### Listeria Monocytogenes (Passed)

(qPCR)

Analyte	Remark
Listeria Monocytogenes	Absence

Xueli Gao      Lab Toxicologist  
Ph.D., DABT

Aixia Sun      Principal Scientist  
D.H.Sc., M.Sc., B.Sc., MT (AAB)

*This report shall not be reproduced, without written approval, from ACS Laboratory. The results of this report relate only to the material or product analyzed. Test results are confidential unless explicitly waived otherwise. Accredited by a third-party accrediting body as a competent testing laboratory pursuant to ISO/IEC 17025 of the International Organization for Standardization.*

721 Cortaro Drive  
Sun City Center, FL - 33573

P: +1 (866) 762-8379  
F: +1 (813) 634-4538

E: [info@acslabcannabis.com](mailto:info@acslabcannabis.com)  
<http://www.acslabcannabis.com>

License No. 800025015  
CLIA No. 10D1094068

Order #: CAN200527-080009      Order Date: 2020-05-27      Collection Date: 2020-06-04      Report Date: 2020-06-09

Batch #: A8  
Sample #: AAAH059  
Specimen Type: CBD/HEMP Derivative Products (Ingestion)  
Extracted From: hemp  
Description: strawberry lemonade tincture

Initial Gross Weight: 19241 mg  
Net Weight: 10534 mg  
Density: .9531 mg/ml  
Method: SOP-3



**Pesticides FL V4 (Non-Inhalable) (Passed)** (LCMS/MS)

Analyte	Action Level	Result	LOQ	Analyte	Action Level	Result	LOQ	Analyte	Action Level	Result	LOQ
Abamectin	300	<LOQ	28.23	Acephate	3000	<LOQ	30	Acequinocyl	2000	<LOQ	48
Acetamiprid	3000	<LOQ	30	Aldicarb	100	<LOQ	30	Azoxystrobin	3000	<LOQ	10
Bifenazate	3000	<LOQ	30	Bifenthrin	500	<LOQ	30	Boscalid	3000	<LOQ	10
Captan	3000	<LOQ	30	Carbaryl	500	<LOQ	10	Carbofuran	100	<LOQ	10
Chlorantraniliprole	3000	<LOQ	10	Chlordane	100	<LOQ	10	Chlorfenapyr	100	<LOQ	30
Chloromequat Chloride	3000	<LOQ	10	Chlorpyrifos	100	<LOQ	30	Clofentezine	500	<LOQ	30
Cypermethrin	1000	<LOQ	30	Coumaphos	100	<LOQ	48	Cyfluthrin	1000	<LOQ	30
Dichlorvos	100	<LOQ	30	Daminozide	100	<LOQ	30	Diazinon	200	<LOQ	30
Ethoprophos	100	<LOQ	30	Dimethoate	100	<LOQ	30	Dimethomorph	3000	<LOQ	48
Fenhexamid	3000	<LOQ	10	Etofenprox	100	<LOQ	30	Etoazole	1500	<LOQ	30
Fipronil	100	<LOQ	30	Fenoxycarb	100	<LOQ	30	Fenpyroximate	2000	<LOQ	30
Hexythiazox	2000	<LOQ	30	Fonicamid	2000	<LOQ	30	Fludioxonil	3000	<LOQ	48
Kresoxim Methyl	1000	<LOQ	30	Imazalil	100	<LOQ	30	Imidacloprid	3000	<LOQ	30
Methiocarb	100	<LOQ	30	Malathion_A	1000	<LOQ	30	Metalaxyl	3000	<LOQ	10
Mevinphos	100	<LOQ	10	Methomyl	100	<LOQ	30	methyl-Parathion	100	<LOQ	10
Oxamyl	500	<LOQ	30	Myclobutanil	3000	<LOQ	30	Naled	500	<LOQ	30
Permethrin	1000	<LOQ	30	Paclobutrazol	100	<LOQ	30	Pentachloronitrobenzene	200	<LOQ	10
Prallethrin	400	<LOQ	30	Phosmet	200	<LOQ	30	Piperonylbutoxide	3000	<LOQ	30
Pyrethrins	1000	<LOQ	30	Propiconazole	1000	<LOQ	30	Propoxur	100	<LOQ	30
Spinosad	3000	<LOQ	30	Pyridaben	3000	<LOQ	30	Spinetoram	3000	<LOQ	10
Spiroxamine	100	<LOQ	30	Spiromesifen	3000	<LOQ	30	Spirotetramat	3000	<LOQ	30
Thiamethoxam	1000	<LOQ	30	Tebuconazole	1000	<LOQ	30	Thiacloprid	100	<LOQ	30
				Trifloxystrobin	3000	<LOQ	30				

, LOQ = Limit of Quantitation

Xueli Gao      Lab Toxicologist  
Ph.D., DABT

Aixia Sun      Principal Scientist  
D.H.Sc., M.Sc., B.Sc., MT (AAB)

*This report shall not be reproduced, without written approval, from ACS Laboratory. The results of this report relate only to the material or product analyzed. Test results are confidential unless explicitly waived otherwise. Accredited by a third-party accrediting body as a competent testing laboratory pursuant to ISO/IEC 17025 of the International Organization for Standardization.*

721 Cortaro Drive  
Sun City Center, FL - 33573

P: +1 (866) 762-8379  
F: +1 (813) 634-4538

E: [info@acslabcannabis.com](mailto:info@acslabcannabis.com)  
<http://www.acslabcannabis.com>

License No. 800025015  
CLIA No. 10D1094068